

RCD Uni Drivers

For USB to UART Bridge CP210x

Installation Manual



RCD Radiokomunikace spol. s r. o.
Staré Hradiště 26
533 52 Pardubice
Czech Republic

www.rcd.cz

Rev.: 30.08. 2012

CONTENTS:

1.	Introduction.....	2
2.	Contents of the Installation CD ROM.....	2
3.	Installation	2
3.1.	Installation of RCD Uni Drivers for USB to UART Bridge	2
3.2.	Assigning of the Driver to the Connected Device	5
4.	Problems Solving.....	5
4.1.	Uninstalling of the Drivers in x64 Bits Operating Systems.....	5

1. Introduction

RCD Radiokomunikace spol. s r.o. uses CP2102 USB to UART bridge of Silicon Laboratories in own devices and that is why we offer drivers called **RCD Uni Drivers** (the driver all the under mentioned). It is necessary to install **the driver** for supported operating system prior to connection of the equipment to the PC (personal computer). **The driver** setup file allows to install drivers for following operating systems:

- Windows® XP x32 a x64 Signature Only - Microsoft Windows XP family
- Windows® 7 x32 a x64 Signature Only - Device - Compatible with Windows 7
- Windows Vista® x32 Unsigned driver

The driver is listed (e.g. Windows® XP) under the Start button in **Settings / Control panel / Add/Remove Programs** menu after installation and it is listed under **My Computer / System Properties / Hardware / Device manager** as **RCD Uni USB-RS232 Device (CP210x)** after connection to the system within **Ports** item.

Note:

The driver setup **is not** determined for Windows Vista® x64 operating system due to low interest of customers for the driver in this system. Windows Vista® x32 operating system is supported.

2. Contents of the Installation CD ROM

- CP210xRCDUniDriver_v6_4 Installation File Folder
- Navod na instalaci Installation Manual Folder

3. Installation

Installation proceeds in two steps. First of all it is necessary to install the driver to the Operating system and after that is assigned **the driver** to the available serial port during the first connection of CP2102 device to USB port.

It is necessary to be logged into the operating systems Windows® XP, Windows Vista® or Windows® 7 as the administrator in order to install or uninstall the driver.

If an older driver is already installed in the operating system it is possible to either reinstall this driver (so-called update) or uninstall this driver before installation of the new one („**Add/Remove Programs**” in Windows® XP, „**Programs and features**” in Windows Vista® and Windows® 7). Title of the item will be in all probability following: „**RCD SPORA Device (CP210x)**” or „**RCD Uni USB-RS232 Device (CP210x)**”.

Caution:

Uninstallation of older drivers under Windows Vista® x64 and Windows® 7 x64 is a bit difficult and that is why it is described in the special chapter “**Problems solving**”.

Look at the www.rcd.cz home page for the latest driver version.

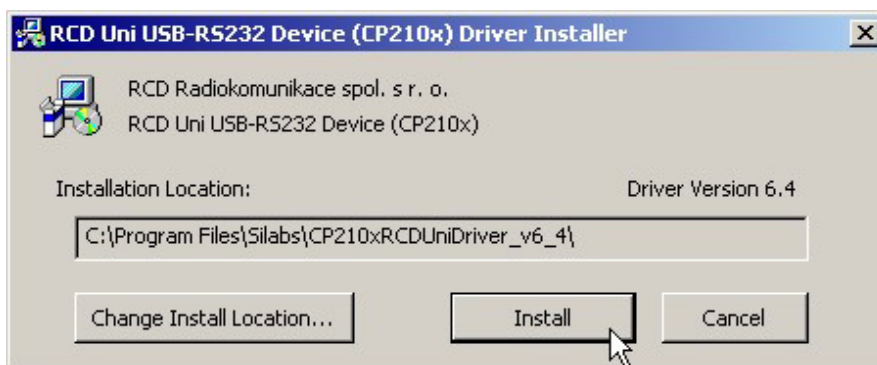
3.1. Installation of RCD Uni Drivers for USB to UART Bridge

It is recommended to have all CP210x's devices disconnected from USB port of PC.

Run **SetupRCDUni.exe** from **CP210xRCDUniDriver_v6_4** folder of installation CD ROM to install driver for CP210x USB to UART Bridge (RS232 converter). The first setup window will appear:

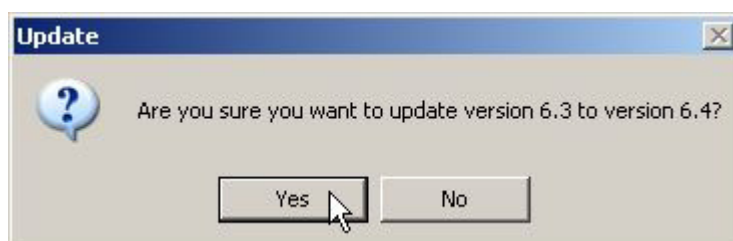


Press **Next** button to open a „RCD Uni USB-RS232 Device (CP210x) Driver Installer“ window.



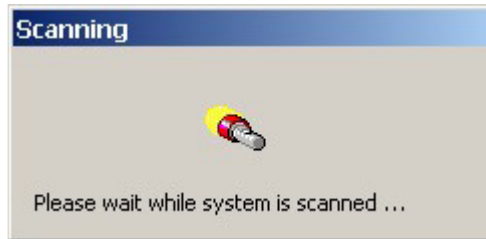
Check placing of **the driver** folder in „C:\Program Files\Silabs\CP210xRCDUniDriver_v6_4\“. The folder „**Program Files**“ can be named differently in x64 operating system or in localized or another way pre-set operating system. It is recommended not to change location of **the driver**. Push **Install** button to start **the driver** installation.

After re-installation of **the driver** (update) **the driver** warning update window will appear.

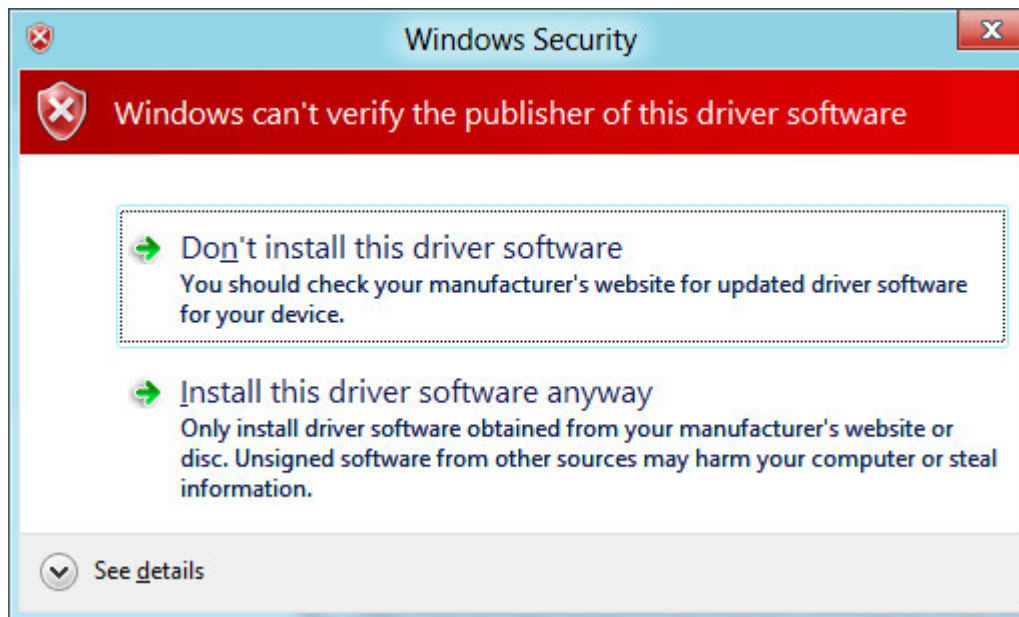


Press **Yes** button.

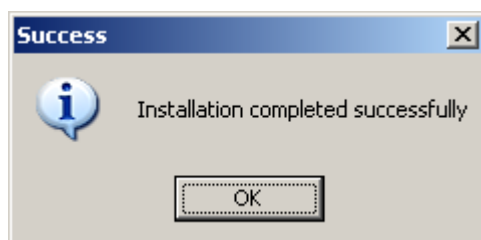
If **the driver** has the hardware compatibility signing two following windows will appear after a successful installation.



If the driver has no hardware compatibility sign, i.e. for Windows Vista® x32, the compatibility verify warning of operating system will appear.



Choose **Install this driver software anyway** option. The success information window will appear after successful installation.



Press OK button to confirm installation.

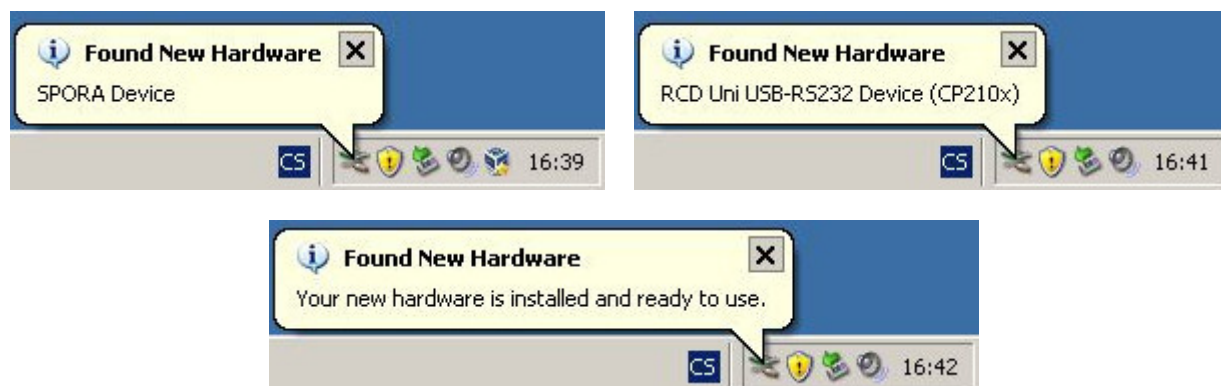
Make restart of PC if it is necessary.



3.2. Assigning of the Driver to the Connected Device

Connect CP2102 USB to UART bridge device produced by RCD Company to the USB port. Switch on power supply if the device is not supplied from USB port of PC. Assigning of **the driver** („RCD Uni USB-RS232 Device (CP210x)“) to the device is done during first connection to the PC.

Assigning of the signed drivers is performed automatically, i.e. also in our case. It is succeeded by three balloons messages in the bottom right corner of the screen. See following images.



The connected device is ready to use after third message is shown.

Any other manipulation with device (connect/disconnect to/from USB) should not be followed by any other driver assignment requests or reset PC requirements.

Note:

Number of **the driver** assignment depends on number of devices connected to the one PC system. For example: for two RCD devices connected to the one PC **the driver** (i.e. **RCD Uni Driver**) will be assigned two times.

4. Problems Solving

This chapter describes installation/uninstallation and/or re-installation problem under x64 operating systems.

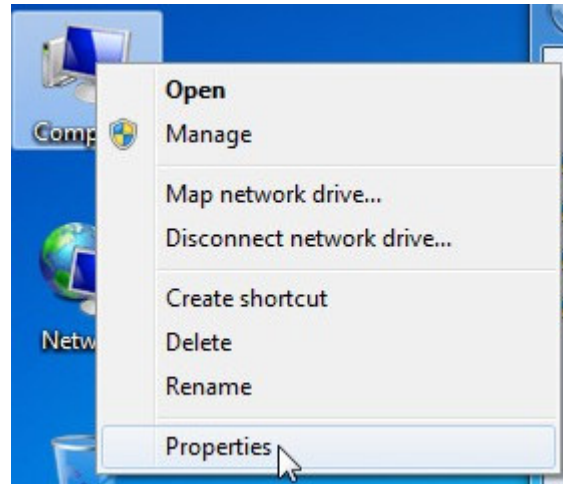
4.1. Uninstalling of the Drivers in x64 Bits Operating Systems

This is the description of the way how to uninstall (re-install) the driver in x64 bits OS Windows® 7 as well as Windows Vista®. If a newer driver is installed after the older one had been uninstalled (uninstalling - see Chapter 3), the older one will still stay active.

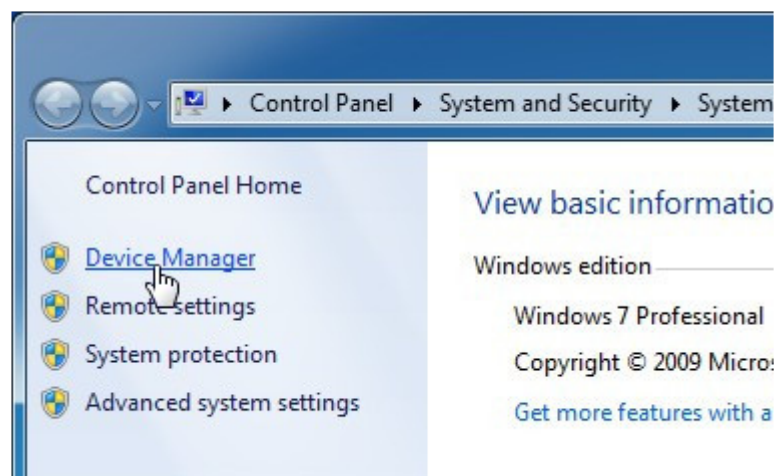
For example: we re-install an older driver v6.3a by **the new driver** v6.4. We connect device to the PC. The driver v6.3a will be assigned to the connected device instead of the expected driver v6.4. It means an older driver is still active although a new one driver is installed. This problem is necessary to solve by manual removing (uninstalling) of older driver using the system **Device Manager**.

Manual removing of the driver using Device Manager

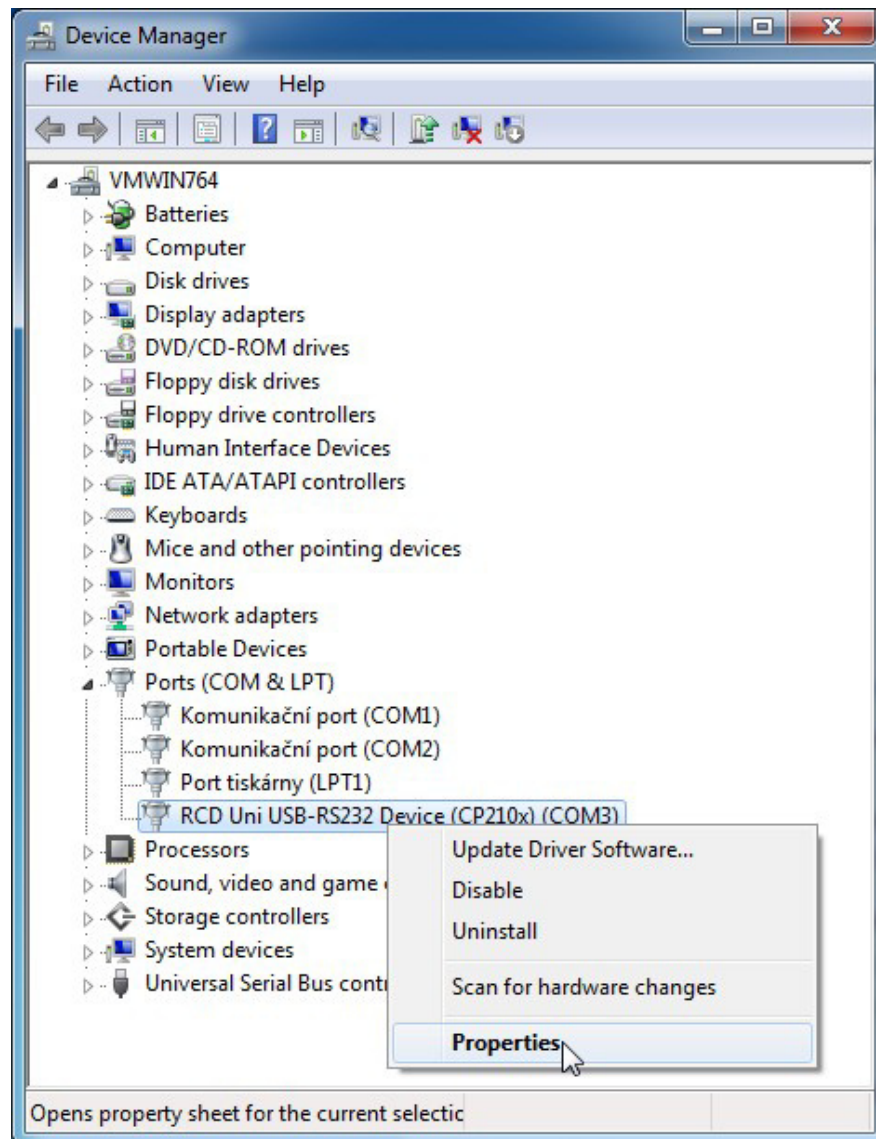
- Connect device using RCD Uni Driver to the USB port
- Click by right mouse button to **Computer** icon. Context menu will appear.



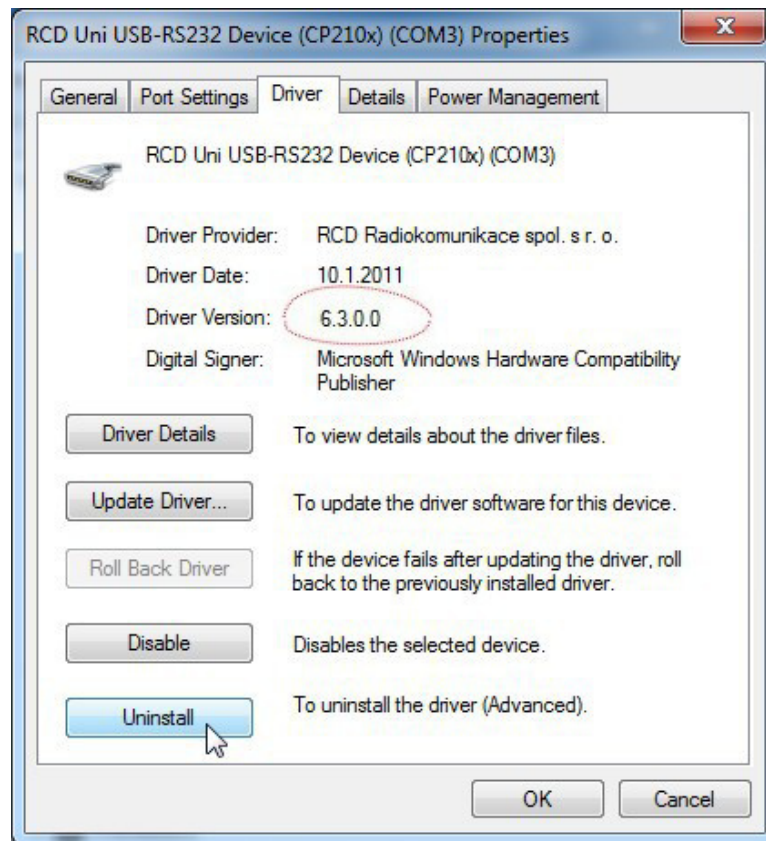
Choose **Properties** option in the context menu window. A new window will open and after that choose **“Device Manager”** item in the upper left corner of the window.



Choose item **Ports** in **Device Manager** window and click „**RCD Uni USB-RS232 Device (CP21xx)**“ item.



Click by right mouse button to show context menu and click **Properties** item.



Go to **Driver** tab and check version of **the driver**. If the shown version is not expected version of the driver (here version 6.3.0.0 instead of 6.4.0.0) than click Uninstall button. A new confirmation window will appear.



Check off „**Delete the driver software for this device**” option and push down **OK** button. Driver will be deleted.

- Disconnect the device using CP2102 from the USB port

New driver assignment will occur after a new connection of the device using RCD Uni Driver to the USB port and the driver version should be right.