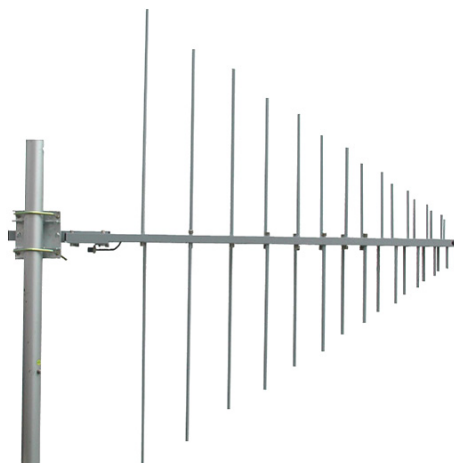


BD 550

DESCRIPTION

Directional logarithmic-periodical antenna is designed for measuring, monitoring and survey purposes. The antenna is suitable for mobile setting because of its robust collapsible construction.



TECHNICAL SPECIFICATION

| Type | BD 550 | |
|-------------------------|---------------|---|
| Frequency range | MHz | 100 + 800 Rx 100 + 500 Tx |
| Technical solution | | logarithmic-periodical |
| Gain | dBi | 5.0 + 8.5 |
| Radiation pattern | | directional |
| Polarization | | vertical, horizontal |
| Impedance | Ω | 50 |
| VSWR | | typ. < 2, max. < 3 |
| Max. input power | W | 400 |
| Grounding | | All metal parts of antenna including the mounting kit are DC grounded |
| Antenna holder | mm | \varnothing 40 (standard) |
| Material holder | | aluminium alloy, hot dip zinc steel, all screws and nuts: stainless steel |
| Weight antenna / holder | kg | 5.2 |
| Dimensions w x h | mm | 1500 x 1510 |
| Accessories | | Leather cases |
| Connector | | type „N“ - female |

