

## TECHNICAL PARAMETERS

- **FREQUENCY RANGE** 380÷395 MHz or 403÷470 MHz or 146÷174 MHz
- **RF POWER OUTPUT** 4W (personal radio), 20W (mobile radio), 12W (mobile repeater, multi-purpose repeater)
- **NUMBER OF CHANNELS** max. 16
- **CHANNEL SPACING** 12.5 kHz (20 kHz, 25 kHz)
- **OPERATING MODE** Semiduplex, simplex
- **MODULATION** QPSK
- **OPERATING TEMPERATURE RANGE** -25 to +55°C

### RCD Radiokomunikace spol. s r. o.

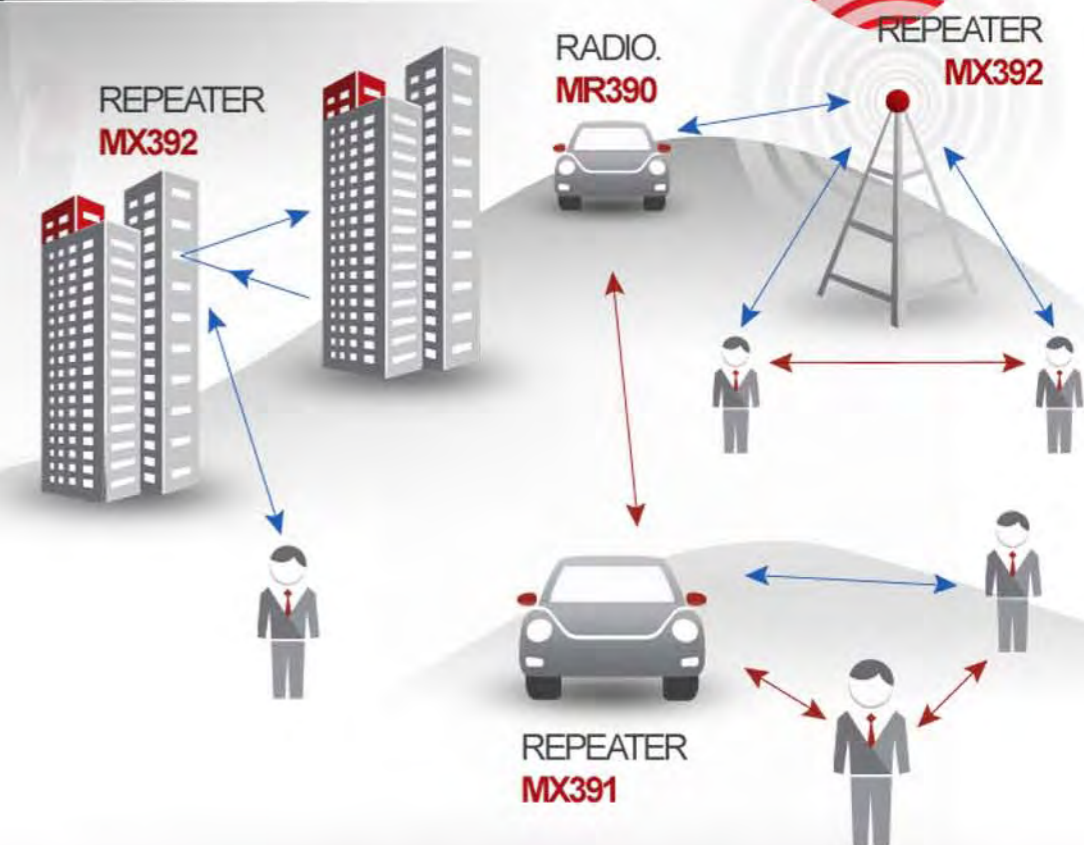
Stare Hradište 26  
533 52 Pardubice  
Czech Republic

Phone **+420 466 415 755**  
e-mail **marketing@rcd.cz**  
www **http://www.rcd.cz**

# SPORA

SOPHISTICATED POLICE RADIO  
FOR TEAMS **IN ACTION**

**RCD**



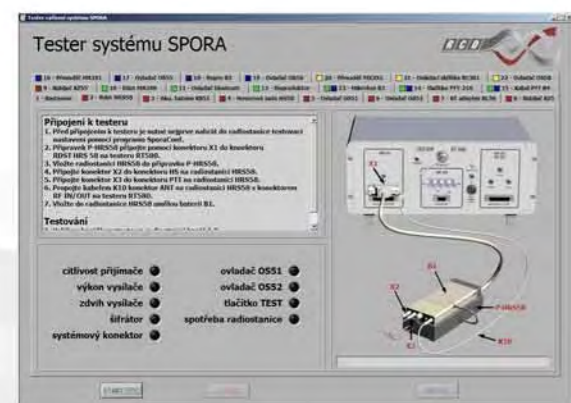
## MOBILE RADIO MR 390

Mobile Radio MR 390 is designed for hidden car installation. It allows secret and comfortable communication even in critical situations thanks to the special accessories. The control items are installed close to the front seats according to the user's requirements. It is possible to connect various speaker and microphone types for comfortable communication. Covert communication is provided by the system of hidden antennas which does not change the exterior of car.



## MOBILE REPEATER MR 391

Mobile repeater MR391 includes all functions of Mobile Radio MR 390. Moreover, it can be switched to the repeater mode to work as a repeater and can extend the working range of other Spora radios. Car crew can listen to the communication and can transmit their message in this mode too. Important functions are controlled from a small panel which can be installed within driver's reach. The repeater is designed for an installation in a car boot.



## TESTER RT 580

Tester RT 580 is designed for user friendly testing of all Spora system components. It is useful for radio and accessories correct function checking eventually for malfunction detection. It provides RF, AF and digital signal measurements and thus substitutes several expensive measuring devices such as RF generator, Wattmeter, AF generator and analyzer etc. All tests are automatic and controlled by personal computer with user friendly software which is designed even for less qualified user. At the end of the test, the user can print the final test report.

## REPEATER MX 392

Repeater MX 392 is designed for instant usage in various situations. It can operate as a repeater or a radio base station. MX 392 can be controlled locally or remotely via a telephone line. It can be used for stable installation, or thanks to its portability for instant network building in particular area of interest. Using in car or van is also possible. Due to the accessories inside the MX392 case, the installation and activation is very fast. The repeater can be supplied from mains, special back-up power supply or external accumulator.



## PERSONAL RADIO HRS 58

HRS 58 is a personal radio for user communication in Spora system. It is designed for a covert communication and can be typically carried in a special harness. Due to the small size and low weight HRS 58 can be also placed in handbag, pocket etc.

There is a wide range of accessories available for this radio. The user can choose among several kinds of antennas depending on a particular situation. The antenna can also be integrated into the harness. Other important accessories are radio controllers. The first type is connected via cable and includes vibration signalization. The second one is wireless and similar to a standard car locking remote control. The largest part of accessories is formed by speakers, headphones and microphones including Bluetooth headset.

